



## **Palisades Charter High School Reconstruction Project**

Community Meeting

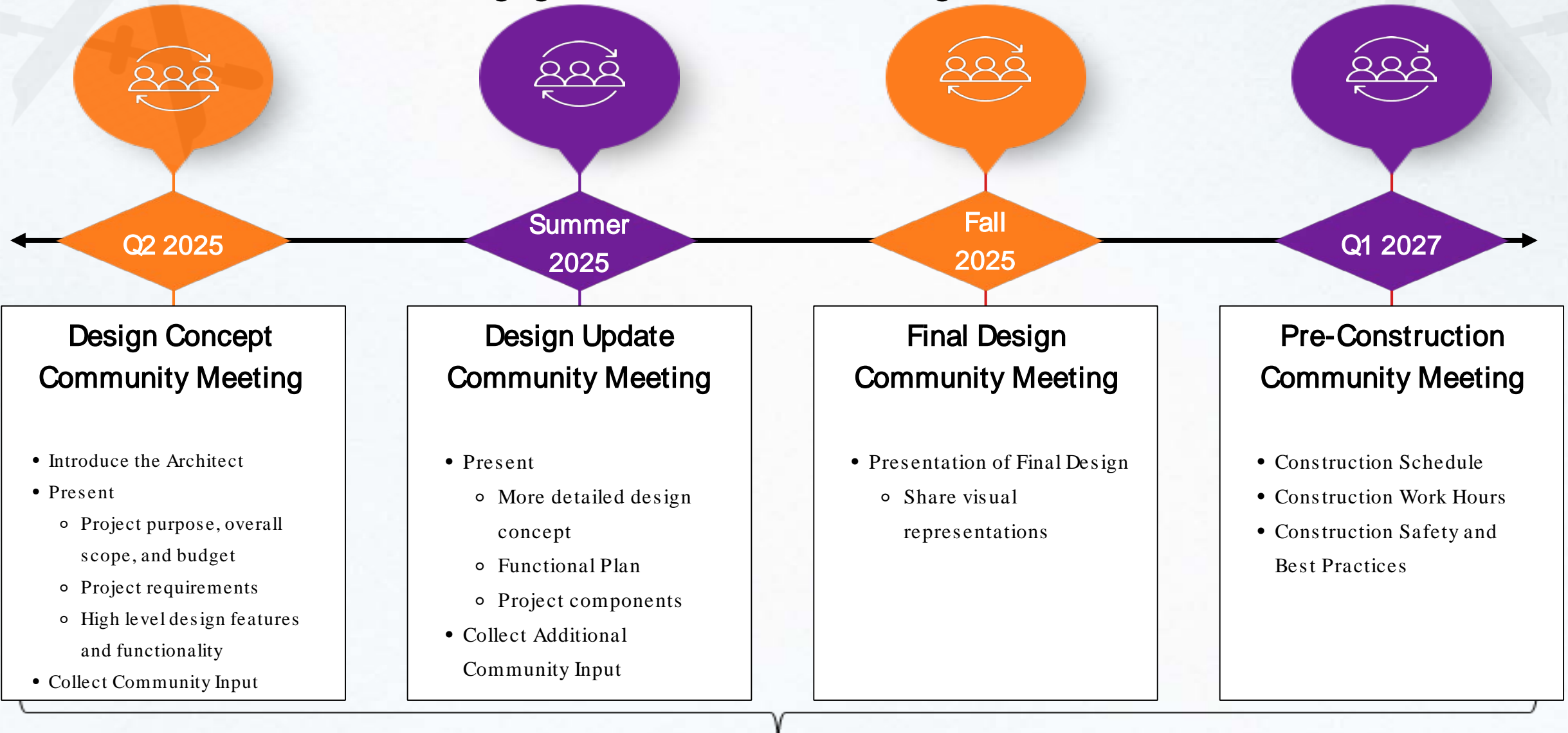
June 05, 2025

# Agenda

- Welcome
- Community Relations Engagement Plan
- Campus Reconstruction Projects
- Palisades Charter High School Project Scope
- Anticipated Timeline
- Preliminary Design Concepts
- Questions

# FSD Community Relations

## Engagement Plan for the Design Process



Stakeholder engagement will continue throughout the duration of the project.

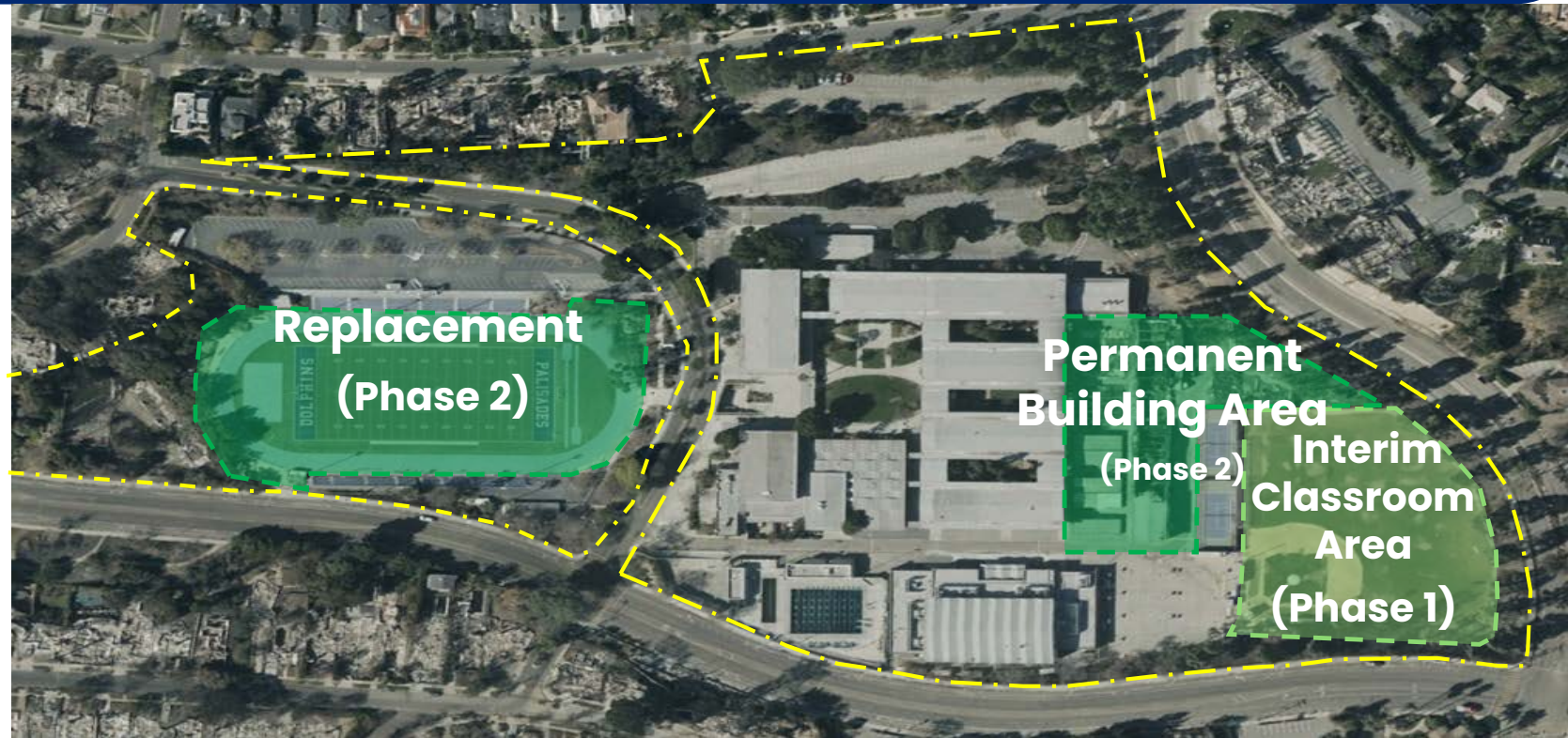
# Campus Reconstruction Projects – Summary

- The January 2025 Palisades Fire caused an unprecedented loss of facilities due to fire damage, with significant impacts to Marquez Charter Elementary School, Palisades Charter Elementary School, and Palisades Charter High School.
- Board Approved Bond Funded Projects on June 3, 2025 to expedite the repopulation of the affected schools.
- These Projects replace facilities that were destroyed at each school.
- Both temporary and permanent facilities will be constructed to serve the student populations that were present prior to the fire.
- The proposed Projects for **Palisades Charter High School** will be funded by the category of need for charter school facilities upgrades and expansions. District will pursue maximum eligible reimbursement to offset bond expenditures

# Palisades Charter HS Proposed Project

## Project Scope:

- 22 new classrooms (general, specialty), admin spaces, and support spaces
- Replace track & football field, baseball field, field lighting, and ancillary buildings
- Infrastructure upgrades including utilities, landscape, and parking
- Interim classrooms during design and construction of the permanent classrooms



**Total Project Budget     ~\$266.6M**



# Palisades Charter HS Proposed Project

## Phase 1 Scope:

- Approx. 29 portable classrooms, 5 admin portables, and 3 portable restroom units
- Installation of temporary infrastructure
- Site preparation for interim play areas and hardscape/landscape replacement
- Restore and repair intact buildings with upgrades for reoccupancy (equipment, systems, interiors)



## Anticipated Schedule

•Phase 1 Installation Start	Q2-2025
•Phase 1 Complete	Q3-2025
•Phase 2 Construction Start	Q1-2027
•Phase 2 Facilities Complete	Q4-2028
•Phase 2 Baseball Field Complete	Q3-2029

# Permanent Campus Program Overview

- New Classrooms
  - 16 General Classrooms
  - 1 Flexible Science Lab w/ workroom (For Environmental Science)
  - 1 Flexible Engineering Classroom w/storage (For Maker Space/STEAM Lab)
  - 1 Media and Filmmaking Classroom w/storage and control booth (For DVMA)
  - 1 Multi-Media Computer Technology Classroom (For Game Design)
  - 1 Special Ed Type III Classroom w/support spaces
  - 1 Special Ed Type I Classroom
- Support Spaces
  - Collaboration Spaces, Teacher Workrooms, Storage, etc.
  - 1 RSP room
  - 1 IEP conference room
  - 8 faculty and staff offices



# Programming Reference Images

**Venice HS  
Makerspace**



**Venice HS  
Science Classroom**



**James Monroe HS  
Makerspace**

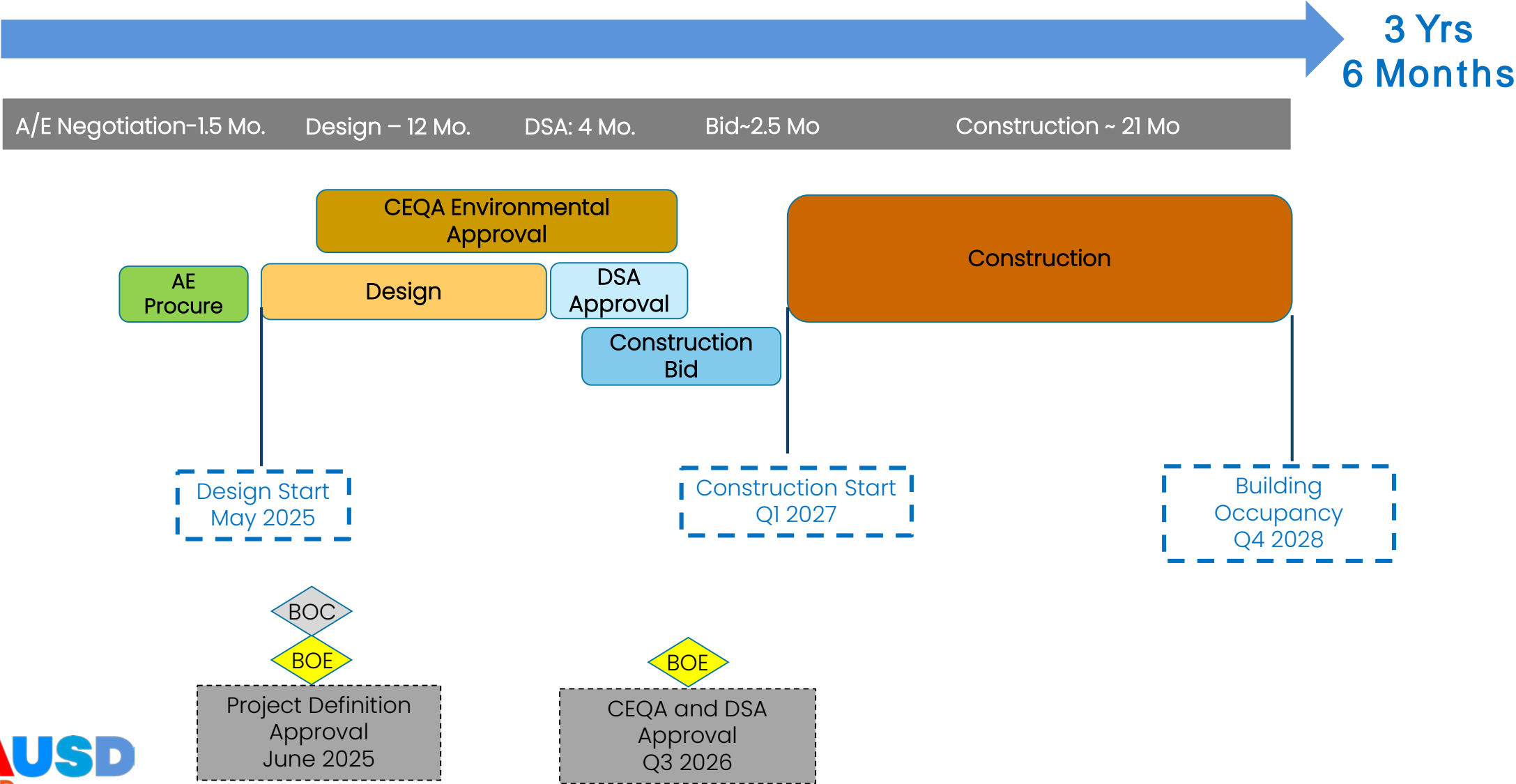


**James Monroe HS  
Film Making**





# Anticipated Reconstruction Timeline





# PALISADES

## CHARTER HIGH SCHOOL





# Meet Your Design Team





# Your Team

 **DLR GROUP**



And many  
more.....

Consulting  
Engineers

**P S O M A S**

 **roshanian  
& associates**

**Kimley»Horn**

 **MAROKO & SHWE, INC**  
*Consulting Mechanical Engineers*

 **BRANDOW & JOHNSTON**  
STRUCTURAL + CIVIL ENGINEERS  
EST 1945

**HLCM**

 **PROTECTION DESIGN AND CONSULTING**

**Historic  
Resources  
Group**



DLR EXPERTISE

# Extensive High School Design Expertise

800+

*High Schools and  
CTE Facilities*





DLR EXPERTISE

# LAUSD High School Experience





# Where Are We Going Together



The background image shows a two-story brick school building with a modern design, featuring large windows and a flat roof. In the foreground, there is a low, light-colored concrete wall with the words "PALISADES HIGH SCHOOL" raised in large, block letters. To the right of the wall, a chain-link fence and some trees are visible under a clear sky.

# Mission Statement

PCHS will empower our diverse student population to make positive contributions to the global community by dedicating our resources to ensure educational excellence, civic responsibility, and personal growth.



The background image shows a large, modern school building with a brick facade and a flat roof. In the foreground, there is a paved area, possibly a parking lot or a walkway, and a chain-link fence. Behind the fence, there are some trees and a sign that reads "JUNIOR DEPARTMENT". The overall scene is a typical school campus.

## **DLR's project goals/guiding principles.**

### **Belonging**

- Foster social connection through layered indoor-outdoor gathering spaces
- Embed identity through student expression, co-designed spaces, and cultural markers
- Create zones of comfort, reflection, and collaboration for all learner types

### **Resilience**

- Design with fire-adaptive materials, passive systems, and flexible structures
- Develop campus-wide emergency adaptability (safe zones, distributed infrastructure)
- Celebrate the rebuild through spaces that mark recovery and community strength

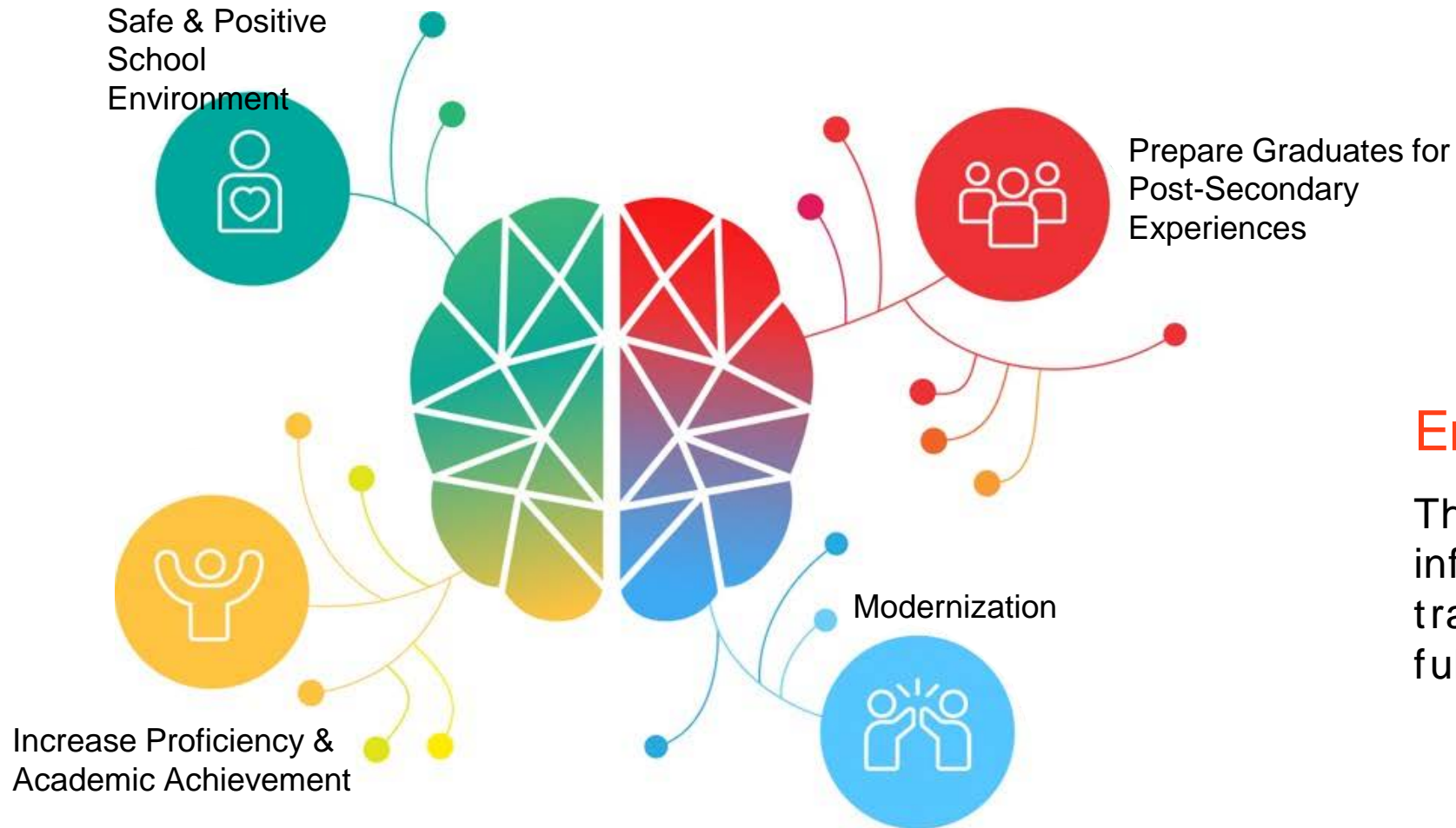
### **Sustainability**

- Maximize daylighting, cross ventilation, and natural shading through form orientation
- Use regenerative landscaping native to the local biome
- Incorporate visible systems (solar, water reuse, carbon tracking) for student learning



DESIGN

# Palisades Charter HS – Local Control Accountability Plan (LCAP) Goals



## Empowering Your Learners

Through a forward-looking, research-informed design focus that delivers transformational opportunity and fulfillment for all

SIMILAR PROGRAM EXISTING CAMPUS

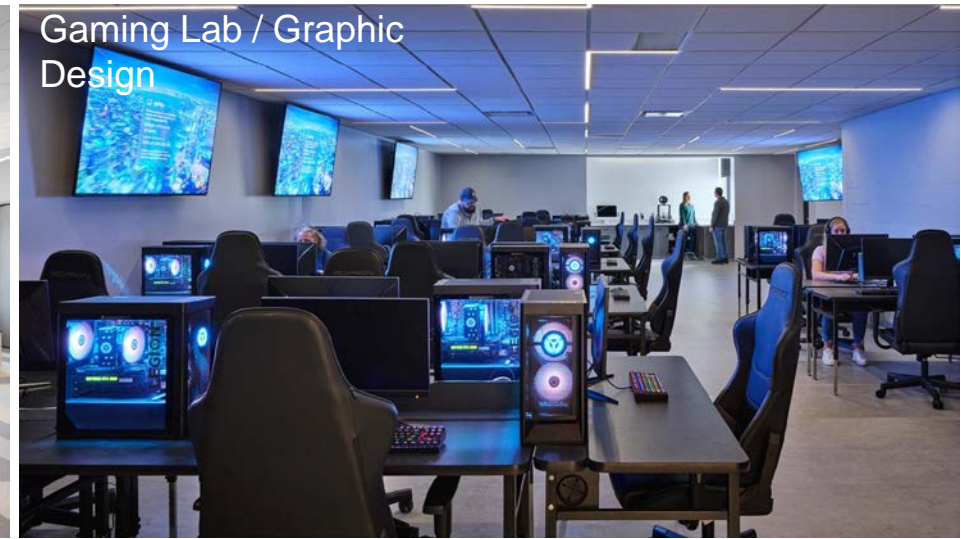
# West Park High School – Similar Spaces & Program



Flex Engineering, Robotics & Makerspace



General Classroom



Gaming Lab / Graphic Design



Student Collaboration



Media / Film Making



Science Lab



# Site Diagrams







EL MEDIO AVE

ERSKINE DR

W BOWDOIN ST

W SUNSET BLVD

W SUNSET BLVD

TEMESCAL CANYON RD

TEMESCAL CANYON RD

01

TRACK & FIELD  
RESTORATION

FIRE DAMAGE  
AREAS

CONSTRUCTION  
STAGING AREA

02

NEW CLASSROOM  
BUILDING  
DEVELOPMENT  
ZONE

FIRE DAMAGE  
AREA

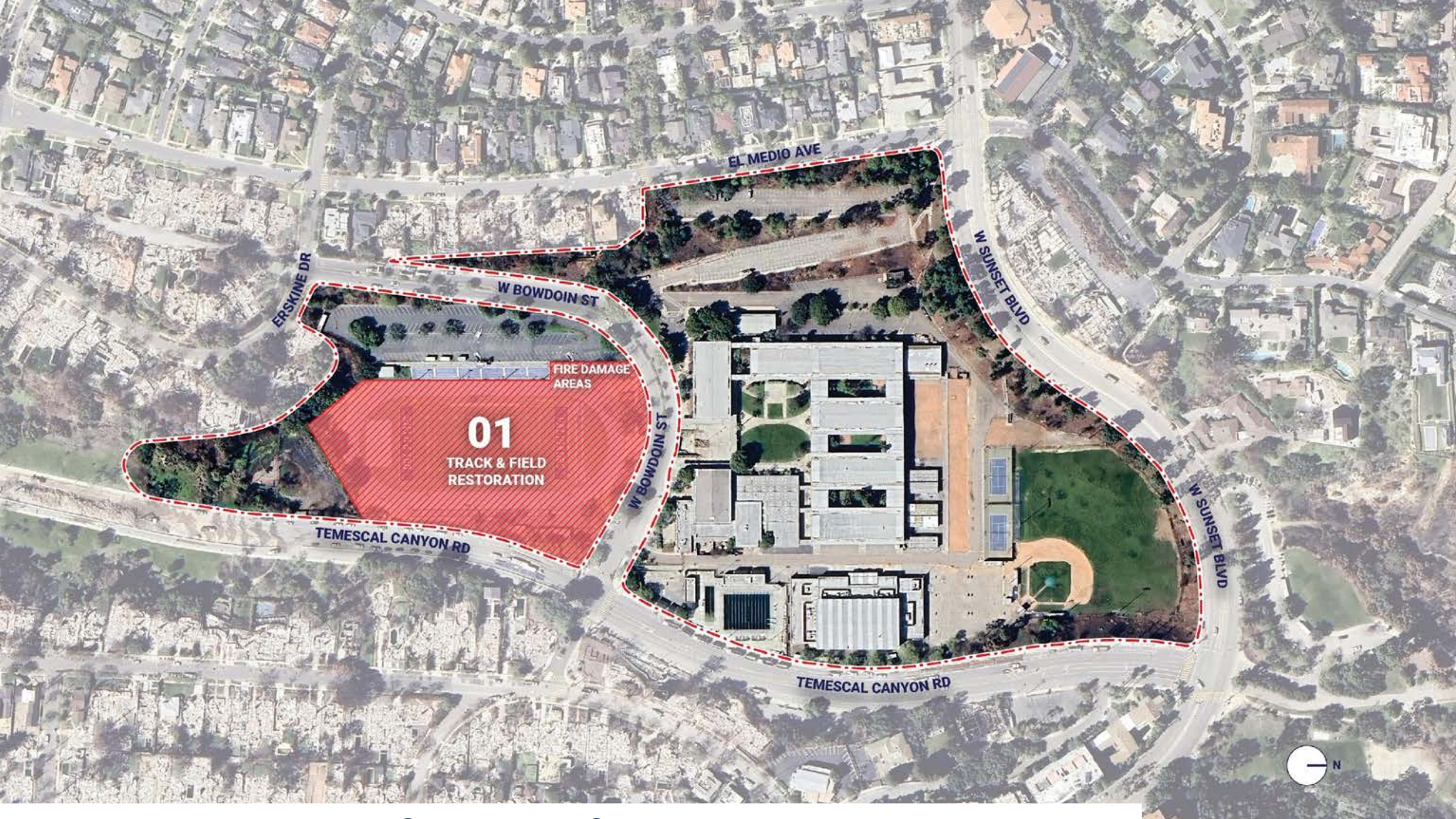
03

NEW  
BASEBALL  
FIELD

FIRE DAMAGE AREA







EL MEDIO AVE

W SUNSET BLVD

W BOWDOIN ST

ERSKINE DR

FIRE DAMAGE AREAS

01

TRACK & FIELD RESTORATION

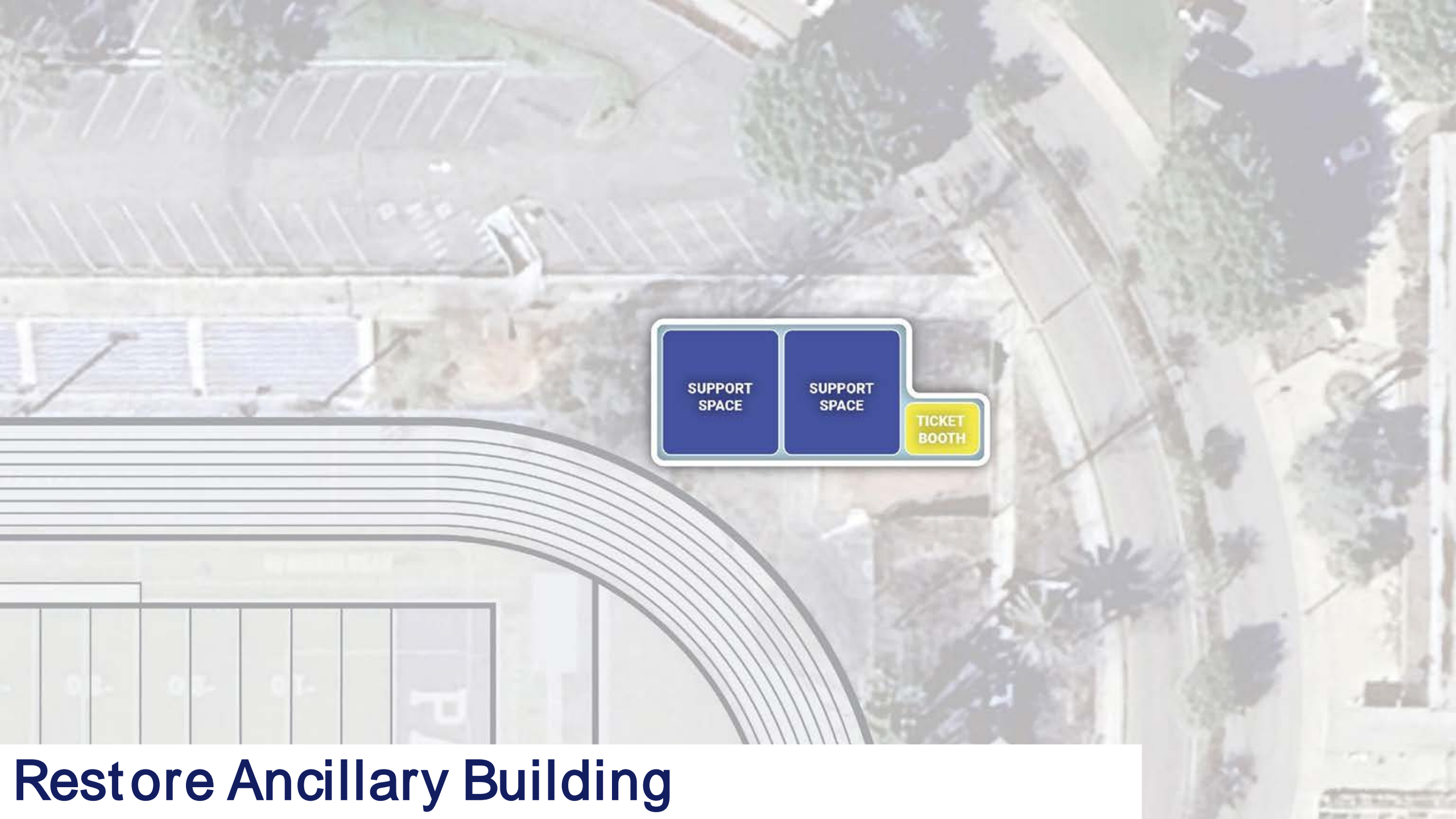
TEMESCAL CANYON RD

TEMESCAL CANYON RD

W SUNSET BLVD







SUPPORT  
SPACE

SUPPORT  
SPACE

TICKET  
BOOTH

**Restore Ancillary Building**





EL MEDIO AVE

ERSKINE DR

W BOWDOIN ST

W SUNSET BLVD

CONSTRUCTION  
STAGING AREA

02

NEW CLASSROOM  
BUILDING  
DEVELOPMENT  
ZONE

FIRE DAMAGE  
AREA

TEMESCAL CANYON RD

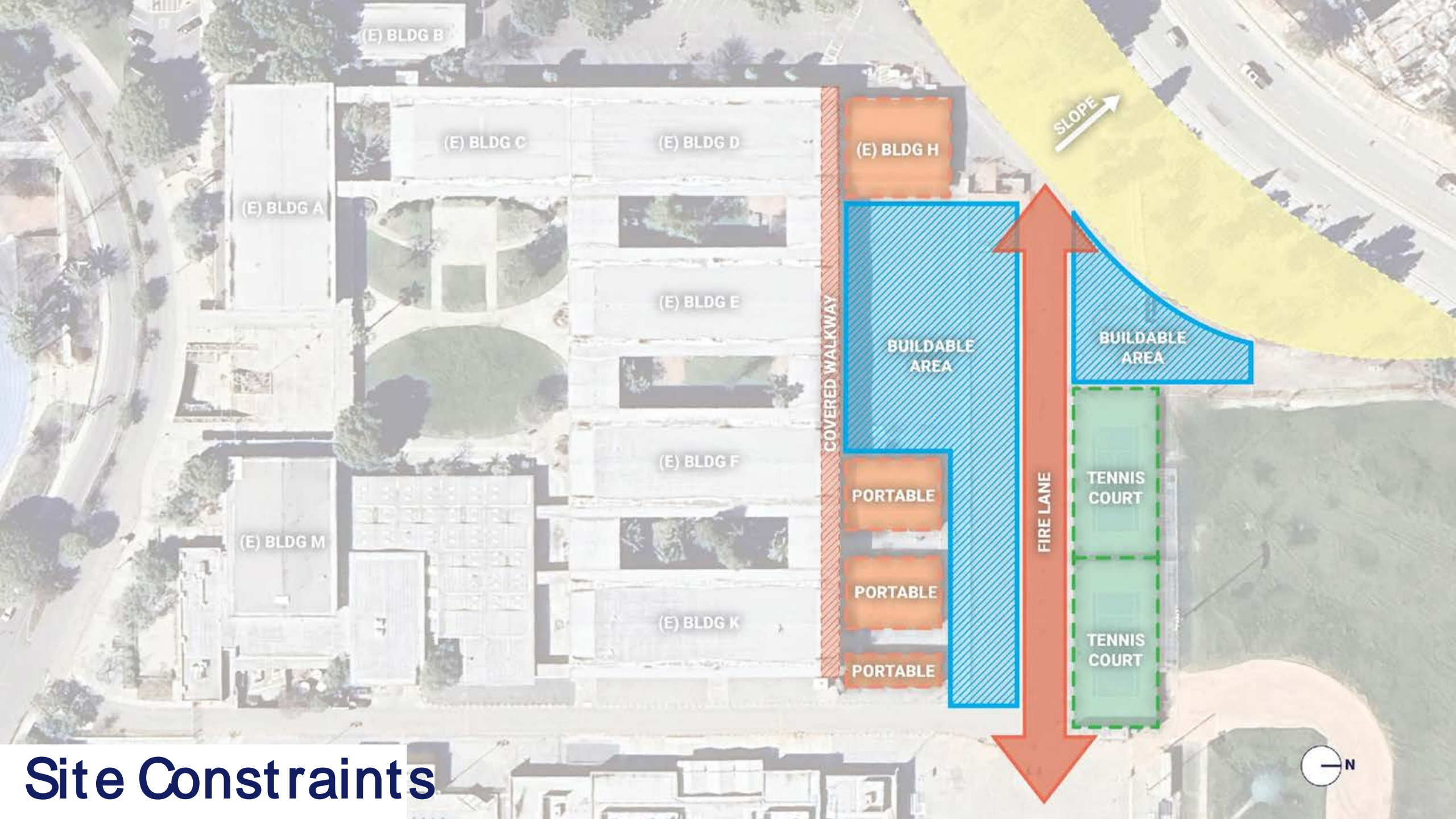
W BOWDOIN ST

W SUNSET BLVD

TEMESCAL CANYON RD

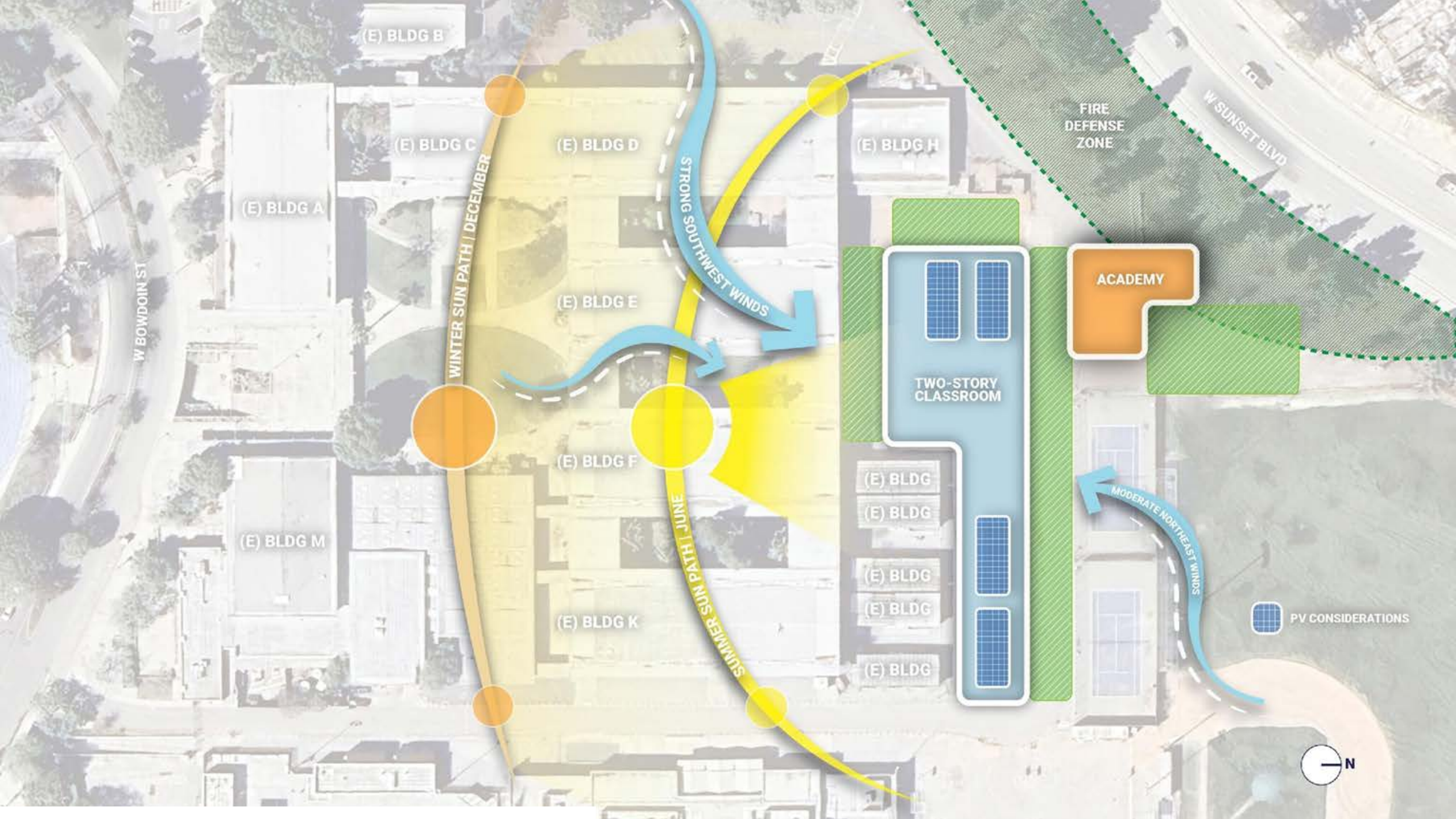






# Site Constraints







SIMILAR EXAMPLE

# Truckee High School – Fire Resilience

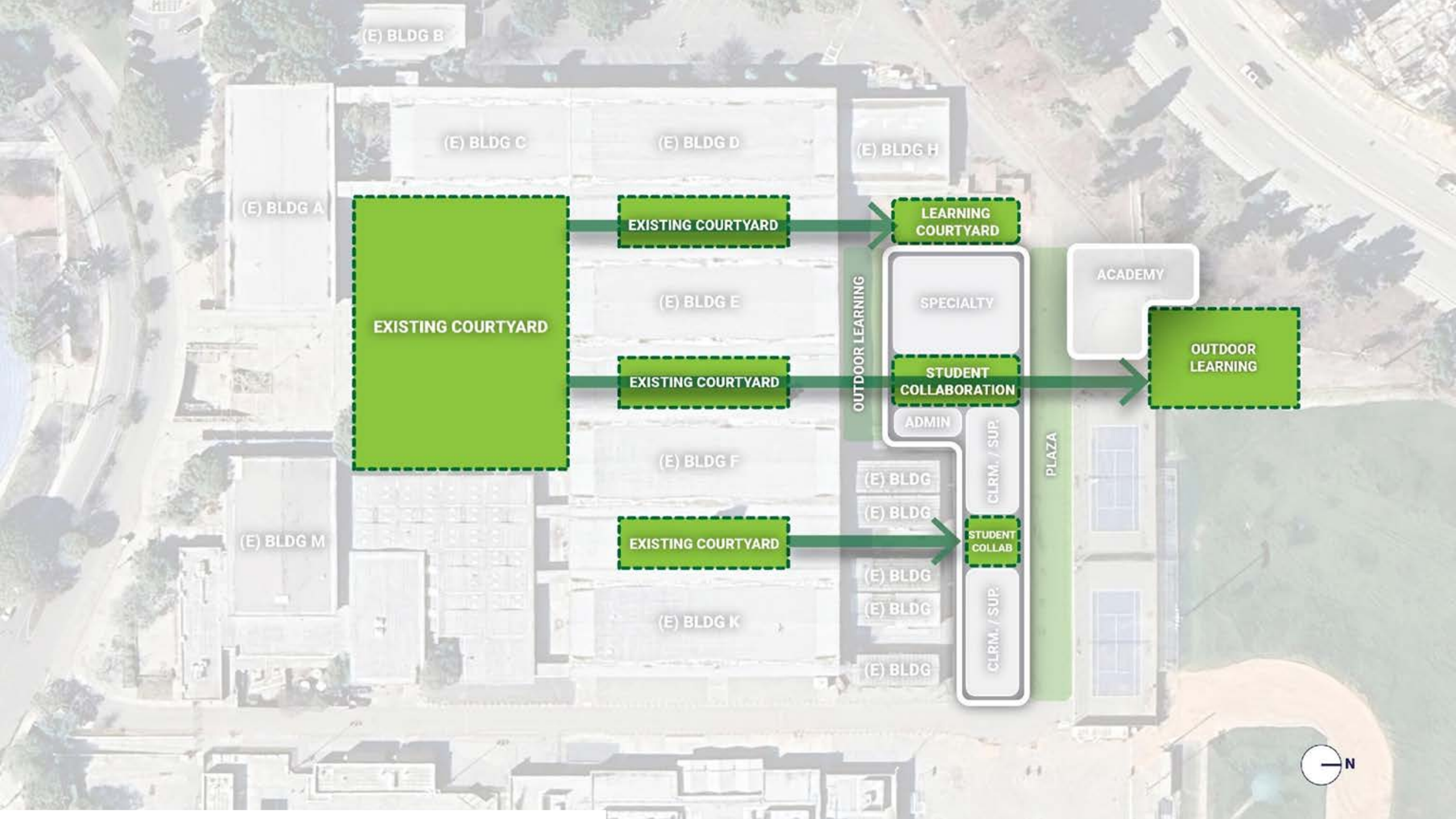
---



## STRATEGIES EMPLOYED

- Fire-Resistant Materials
- Implemented Effective Landscape Design
- Incorporated Sprinkler Systems
- Utilized Fire Breaks
- Designed Fire-Resistant Roofs
- Ventilation Systems to Prevent Ember Intrusion
- Employed Non-Combustible Fencing
- Installed Fire-Resistant Windows
- Utilized Fire Retardant Treatments
- Integrating Smart Technology





(E) BLDG B

(E) BLDG C

(E) BLDG D

(E) BLDG H

(E) BLDG A

EXISTING COURTYARD

LEARNING COURTYARD

(E) BLDG E

EXISTING COURTYARD

OUTDOOR LEARNING

SPECIALTY

ACADEMY

STUDENT COLLABORATION

OUTDOOR LEARNING

(E) BLDG M

(E) BLDG F

ADMIN

CLRM. / SUP.

PLAZA

EXISTING COURTYARD

(E) BLDG

(E) BLDG

STUDENT COLLAB

(E) BLDG

(E) BLDG

CLRM. / SUP.

(E) BLDG

(E) BLDG K

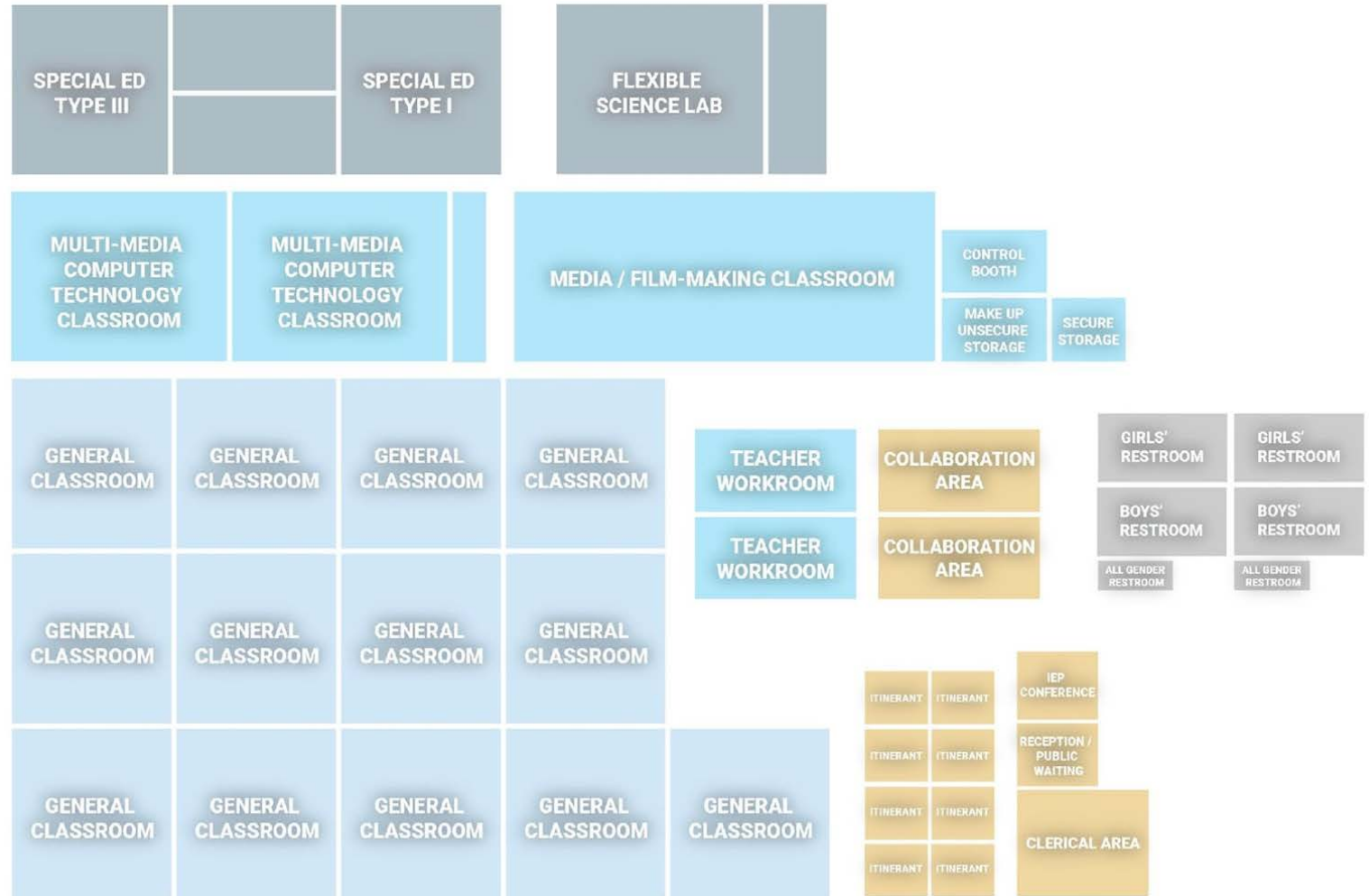




# Program

## Palisades High School

- 13 General Classrooms
- Flex Science Lab
- 3 Elective Specialized Classrooms
- Special Ed Classrooms
- Satellite Admin
- Student Collaboration
- Teacher Workroom

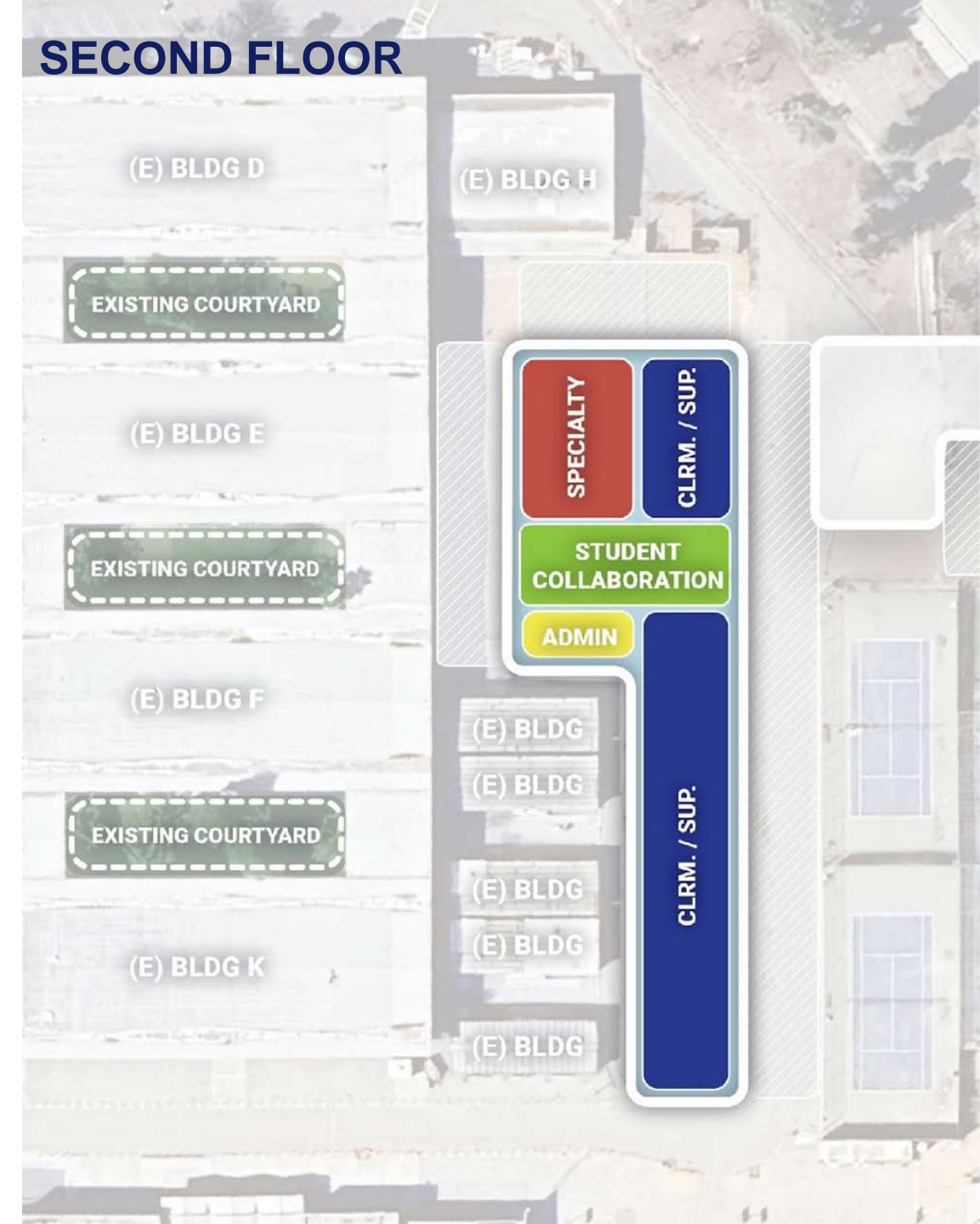
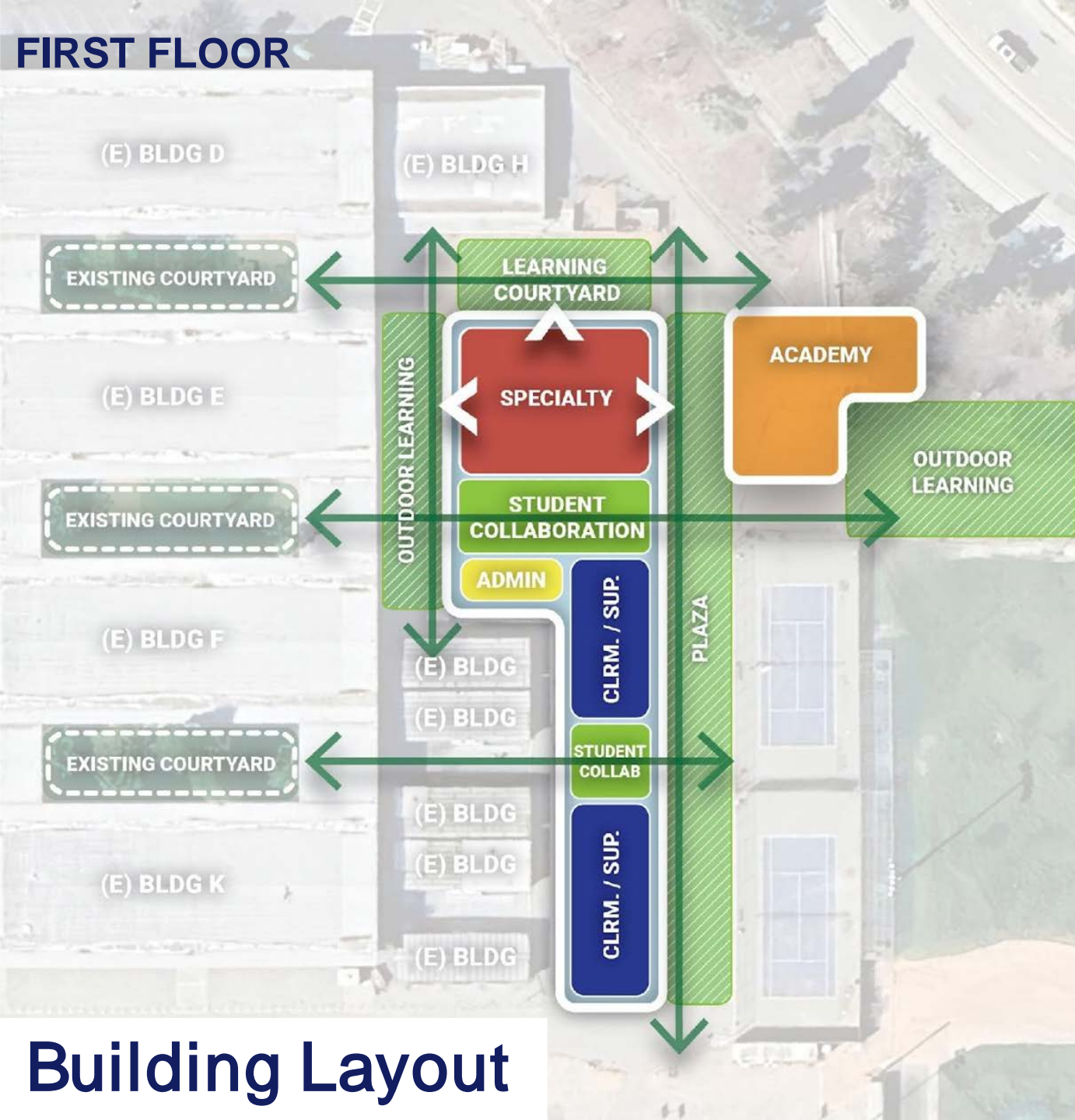


## Pali Academy

- 3 General Classrooms
- Admin Offices
- Support Spaces







Building Layout





EL MEDIO AVE

ERSKINE DR

W BOWDOIN ST

W SUNSET BLVD

W BOWDOIN ST

TEMESCAL CANYON RD

TEMESCAL CANYON RD

W SUNSET BLVD

03  
NEW  
BASEBALL  
FIELD

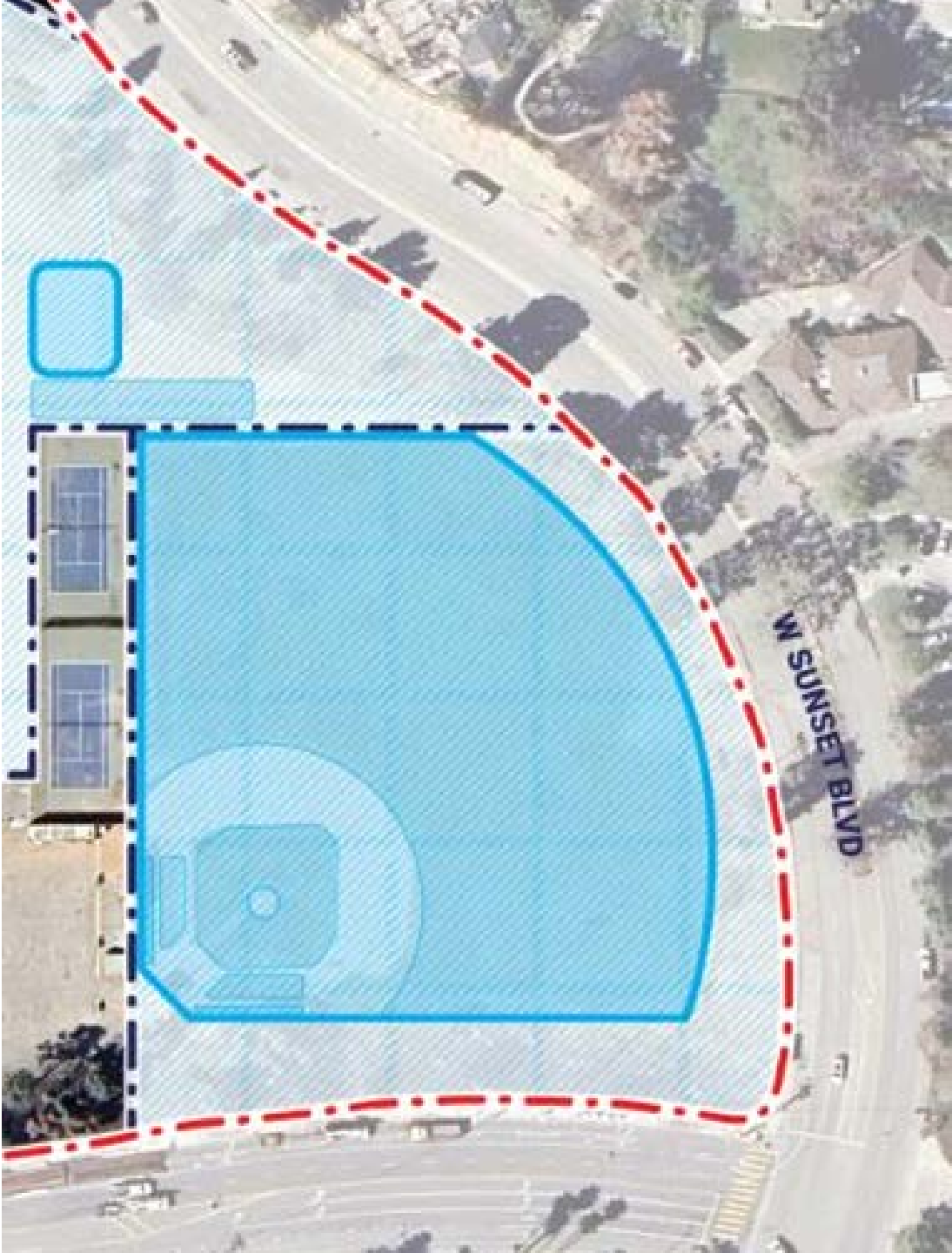
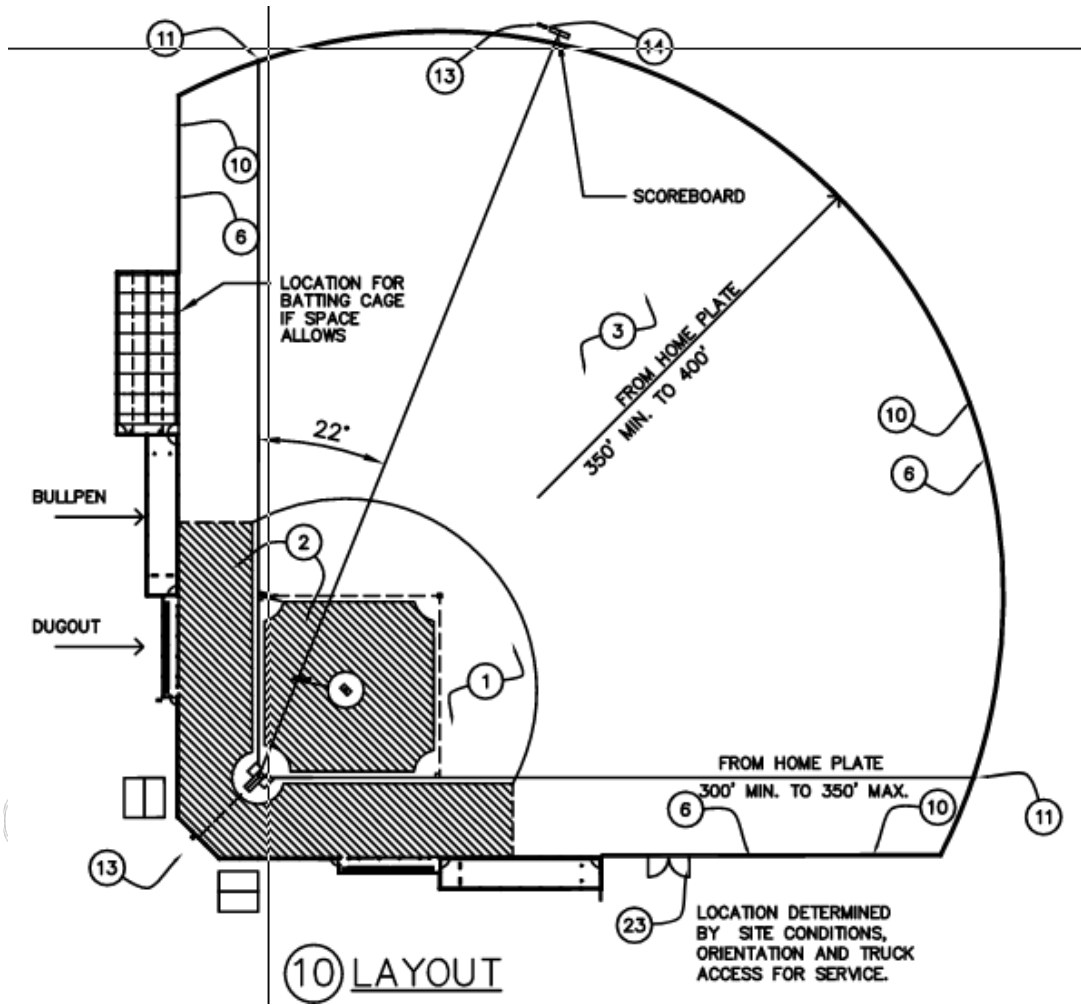
FIRE DAMAGE AREA





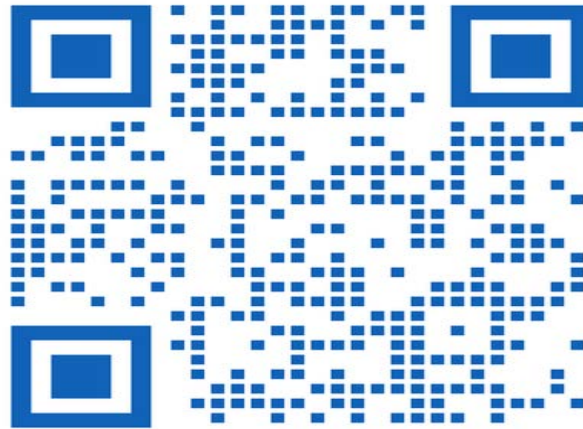
# New Baseball Field

## LAUSD Ed Spec





Submit questions by scanning  
the QR code.



FSD Community Relations Department: 213-241-1340

[community.relations@laschools.org](mailto:community.relations@laschools.org)

<https://www.lausd.org/facilities/community-relations>



## QUESTIONS

---

*Thank You Palisades Charter HS*

